

ASX Announcement
3 April 2017



BOARD OF DIRECTORS

Milan Jerkovic
Non-Executive Chairman
Bryan Dixon
Managing Director
Alan Thom
Executive Director
Greg Miles
Non-Executive Director
Peter Rozenauers
Non-Executive Director

ASX CODE
BLK

CORPORATE INFORMATION
338.5M Ordinary Shares
31.7M Unlisted Options
4.2M Performance Rights

ABN: 18 119 887 606

PRINCIPAL AND REGISTERED OFFICE
Blackham Resources Ltd
L2, 38 Richardson Street
West Perth WA 6005

POSTAL ADDRESS
PO Box 1412
West Perth WA 6872

www.blackhamresources.com.au

E: info@blackhamresources.com.au

P: +61 8 9322 6418
F: +61 8 9322 6398

Matilda/Wiluna Operations Update

Blackham Resources Ltd (ASX: BLK) ("Blackham" or "the Company") wishes to provide an update on recent events associated with its Matilda/Wiluna gold production activities.

Gold Production

Gold production for the March 2017 quarter was 15,056oz* (8,773oz Dec'16 Qtr) (*interim unreconciled). Significant improvements in crusher and mill performance were seen during the quarter, however lower grade profile resulted in lower than forecast production.

Table 1 – Gold Production ramping up

	Dec Qtr	Mar Qtr	YTD
Total Milled	211,203	337,977	549,180
Mill Feed Grade Au	1.5	1.5	1.5
Overall Plant Recovery	88.5	93.7%	91.7%
Total Produced Au	8,773	15,056	23,829

Blackham has revised down its production guidance for the period ended 30 June 2017 due to the impact of heavy rainfall and lower mill grades to its Matilda/Wiluna Gold Operation. Forecast production in the period is now expected to be in the vicinity of 42,000 to 51,000 ounces for the financial year ending 30 June 2017, being just over eight months. Gold production for the June 2017 quarter is expected to improve significantly due to both higher tonnes processed and high grade profile out of the open pits.

Open Pit Mining

Since the Company declared commercial production in January 2017, the site has received 265mm of rain compared to 110mm historical average for the quarter. Total rainfall in March has been four times the historical March average. The heaviest rainfall was experienced from 22nd to 25th March 2017 when 140 mm fell in four days. Open pit mining during the quarter lost 26 days including 15 days lost towards the end of March. All the Matilda open pits have experienced slow dig rates due to the wet conditions significantly reducing the total material and ore mined, particularly during March.

Mining in the Matilda M3 and M4 pits recommenced on the 28th March following a full safety assessment. Road sheeting and ramp maintenance was completed to allow re-access to the M3 and M4 pits. No ore has been sterilized as a result of the rainfall. Open pit mining at the higher grade Galaxy pit is due to start in the first week of April, one month behind schedule due to the slow mining rates at the Matilda pits.

Lower tonnes of ore mined, as well as grade profile being fed to the mill has resulted in lower grade ore being processed. Lower mined material, BCM's, will significantly reduce total mining costs for the quarter.

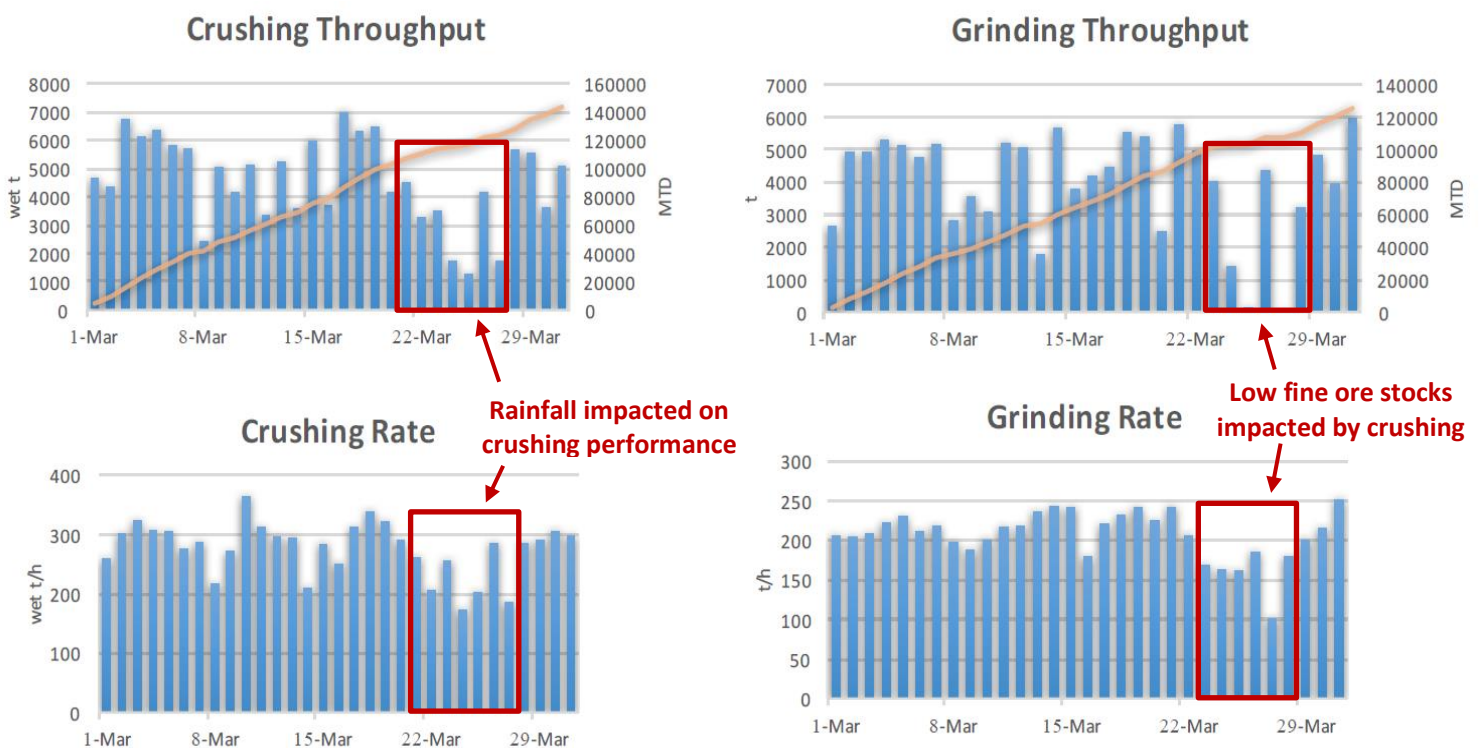
Underground Mining

Significantly less underground ore was extracted from the Golden Age underground than forecast during the quarter. Both development and stope tonnes and ounces were lower than forecast and stoping production has taken longer to ramp up. Ongoing development work and grade control drilling has allowed for a greater understanding of the Golden Age orebody resulting in a more conservative forecast of gold production from the upper portions of Golden Age. The mining schedule is being amended and revised mine plans will be updated over the coming weeks. A drill programme has commenced between the 840 – 1,000RL's with a view to bringing more ore into the mine plan.

Gold Processing

Crushing circuit – Crushing circuit utilisation in the March quarter improved to 69% (65% Dec 2016 Qtr). The crushing circuit during March (prior to the 22nd March rainfall event) operated at 72% utilization and averaged 5,110 wet tonnes per day being 98% of design. The heavy rainfall significantly affect the performance of the crushing circuit for a number of days. The crushing circuit has operated at up to 7,000 wet tpd during March. The crushing circuit operated at nameplate production for 6 weeks prior to the weather impacts (see the Crushing Throughput and Crushing Rate graphs below).

March daily crushing and grinding performance



Grinding Circuit – Milled throughput has improved every month since commissioning. In the six weeks prior to the rain event, the grinding circuit has operated at an average throughput rate of 4,800 tonnes per day being 103% of nameplate design with a maximum up to 5,800tpd. Weather impact on the

crushing circuit limited fine ore supply as seen in the above Grinding Throughput and Grinding Rate graphs. The mills are now back milling above nameplate capacity. Management are targeting milling throughput to 2.0Mtpa – 15% above nameplate capacity which has not yet been built into forecast production.

Grade profile – Grade profile has been ramping up but has been hampered by wet weather and pit conditions and slower mining in both the open pits and underground. The open pit feed grade profile was affected by more lower grade being processed combined with slow mining rates and wet conditions adding to dilution. The reduced development and stoping tonnes coming out of the underground significantly affected average grade profile for the quarter. Mill feed grades are expected to increase significantly during the June quarter due to higher open pit ore grades.

Leach, Elution Circuits and Gold Room - The leach circuit is working very well and total plant recoveries have been strong (93-95%) during the quarter. March production was impacted by a small fire in the gold room which destroyed two of the three electrowinning cells on 27th March 2017. The fire event damage repair cost is not expected to be significant. The third electrowinning cell was back on line on the 30th March 2017. Management have formulated a plan to have the full elution circuit and gold room back on line within two to three weeks. The impact of the fire is not expected to significantly affect production during April.

Expansion Plans for +200,000ozpa Gold Production

The initial Expansion Study has been delayed slightly whilst management focus on operations. All mining designs have been completed. The initial expansion study is close to being finalised and is expected to be released in the near future. The initial study will set the parameters for the sizing, scope, mining and engineering for the Definitive Expansion Study due later this year. Blackham has completed 37,000m of a 50,000m infill and extension drilling programme around the Wiluna open pits with a view to defining the reserves for the Definitive Expansion Study.

For further information on Blackham please contact:

Bryan Dixon
Managing Director
Blackham Resources Limited
Office: +618 9322 6418

Jim Malone
Investor Relations Manager
Blackham Resources Limited
Office: +618 9322 6418

Wiluna/Matilda Gold Operation January 2017 Measured, Indicated & Inferred Resources (JORC 2012)

Matilda Gold Project Resource Summary												
OPEN PIT RESOURCES												
Mining Centre	Measured			Indicated			Inferred			Total 100%		
	Mt	g/t Au	Koz Au	Mt	g/t Au	Koz Au	Mt	g/t Au	Koz Au	Mt	g/t Au	Koz Au
Matilda Mine OP	0.2	2.1	13	7.6	1.8	435	4.3	1.4	200	12.0	1.7	650
Galaxy				0.4	3.1	42	0.4	2.2	25	0.8	2.7	68
Williamson Mine				3.3	1.6	170	3.8	1.6	190	7.1	1.6	360
Wiluna OP ¹				8.4	2.7	730	4.1	2.5	330	12.5	2.6	1,060
Regent				0.7	2.7	61	3.1	2.1	210	3.8	2.2	271
Stockpiles				0.4	1.0	13				0.4	1.0	13
OP Total	0.2	2.1	13	21	2.2	1,451	16	1.9	955	37	2.1	2,422
UNDERGROUND RESOURCES												
Mining Centre	Measured			Indicated			Inferred			Total 100%		
	Mt	g/t Au	Koz Au	Mt	g/t Au	Koz Au	Mt	g/t Au	Koz Au	Mt	g/t Au	Koz Au
Golden Age				0.5	5.3	81	0.9	3.7	110	1.4	4.3	191
Wiluna				9.4	5.2	1570	15.0	4.4	2165	24	4.7	3,735
Matilda Mine UG				0.1	2.5	10	0.6	3.6	70	0.7	3.4	80
UG Total				10	5.2	1,661	17	4.4	2,345	27	4.7	4,006
Grand Total	0.2	2.1	13	31	3.1	3,112	32	3.2	3,300	63	3.2	6,428

Mineral Resource estimates are not precise calculations, being dependent on the interpretation of limited information on the location shape and continuity of the occurrence and on the available sampling results. The figures in the above table are rounded to two significant figures to reflect the relative uncertainty of the estimate.

Competent Persons Statement

The information contained in the report that relates to all other Mineral Resources is based on information compiled or reviewed by Mr Marcus Osiejak, who is a full-time employee of the Company. Mr Osiejak, is a Member of the Australian Institute of Mining and Metallurgy and has sufficient experience which is relevant to the style of mineralisation and type of deposit under consideration and to the activity which is being undertaken to qualify as a Competent Person as defined in the 2012 Edition of the 'Australasian Code for Reporting of Exploration Results, Mineral Resources and Ore Reserves'. Mr Osiejak has given consent to the inclusion in the report of the matters based on this information in the form and context in which it appears.

With regard to the Matilda/Wiluna Gold Operation Mineral Resources, the Company is not aware of any new information or data that materially affects the information included in this report and that all material assumptions and parameters underpinning Mineral Resource Estimates as reported in the market announcements dated 14 December 2016 and 23rd January 2017 continue to apply and have not materially changed.

Forward Looking Statements

This announcement includes certain statements that may be deemed 'forward-looking statements'. All statements that refer to any future production, resources or reserves, exploration results and events or production that Blackham Resources Ltd ('Blackham' or 'the Company') expects to occur are forward-looking statements. Although the Company believes that the expectations in those forward-looking statements are based upon reasonable assumptions, such statements are not a guarantee of future performance and actual results or developments may differ materially from the outcomes. This may be due to several factors, including market prices, exploration and exploitation success, and the continued availability of capital and financing, plus general economic, market or business conditions. Investors are cautioned that any such statements are not guarantees of future performance, and actual results or performance may differ materially from those projected in the forward-looking statements. The Company does not assume any obligation to update or revise its forward-looking statements, whether as a result of new information, future events or otherwise.